

NEW



Quality and reliability is our tradition

KYORITSU

POWER QUALITY ANALYZER KEW 6315

Simultaneous recording of Power & Power Quality measurements in one survey.
The perfect tool for Energy Saving and Power Quality control.



- **Simultaneous Power & Power quality measurements**

Power/ Harmonics/ Waveform/ Power quality are recorded at all CHs. (Voltage: 3ch, Current 4ch)

- **Helpful support functions**

Quick Start Guide, Wiring check and Sensor detection for easy and reliable measurement

- **Measurement with high accuracy**

Guaranteed accuracy: $\pm 0.3\%rdg$ (energy),
 $\pm 0.2\%rdg$ (voltage/ current)

Complies with the International Standard

IEC61000-4-30 Class S and the European Standard EN50160

- **Remote monitoring on PC and Android device**

Remote checking of measurement *in real-time* is possible via Bluetooth communication. Recorded data can be saved in the supplied SD card. EN50160 report can be generated after survey by PC software.

- **Various Clamp Current Sensors**

Various types of clamp and flexible sensors are available: from 1000mA Range up to 3000A Range and Earth leakage measurements

- **Energy consumption check on site**

Trend and demand graphs for easy recognition. TFT color display with high resolution.

- **IEC61010-1 CAT IV 300V, CAT III 600V, CAT II 1000V**

KYORITSU ELECTRICAL INSTRUMENTS WORKS,LTD.

<http://www.kew-ltd.co.jp>

Easy-to-use setting to simultaneous power energy and power quality recordings

POWER QUALITY ANALYZER KEW 6315

START/STOP Quick Start Guide

Easily and securely starts recording

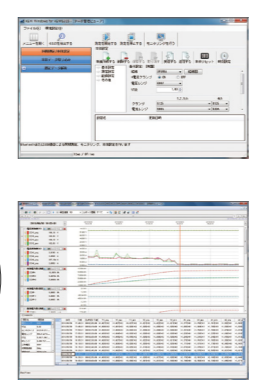
One-Touch START/STOP Key for Quick Start Guide providing easy setup guides.



Windows software for data analysis and setting via USB port

- Automatic creation of graph and list from recorded data.
- Uniform management of setting and recorded data acquired from multiple devices.
- Data can be expressed in crude oil and CO₂ equivalent values in the report.

(System requirements)
 ● OS: Windows®8/7/Vista/XP
 ● Display: XGA (Resolution 1024x768 dots) or more
 ● Hard-disk: Space required 1 Gbyte or more
 ● Other: With CD-ROM drive and USB port.
 NET Framework (3.5 or more)
 *Windows® is registered trademark of Microsoft in the United States.



Real time and Remote measurements

● Measurements can be graphically displayed on Android devices or PC in real-time via Bluetooth communication.

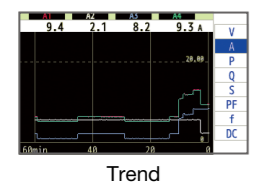
*Bluetooth is a registered trademark of the Bluetooth SIG, Inc.
 Android is a registered trademark of the Google Inc.

W/Wh Power & Energy

Instantaneous value

List	Zoom (8-split)	Zoom (4-split)
V: 239.9 246.3 236.6 V A: 48.1 48.5 47.9 A P: 11.5 11.9 11.5 kW Q: 1.2 1.0 0.9 kvar S: 11.6 11.8 11.4 kVA PF: 0.812 0.809 0.792 f: 49.99 Hz Unbalance: 0.1% A: 0.2%	V1 INST 242.3 V V2 INST 246.6 V V3 INST 236.8 V P INST 44.8 kW S INST 44.7 kVA Q INST 4.2 kvar f INST 59.99 Hz	V1 INST 240.7 V V2 INST 243.3 V V3 INST 233.1 V f INST 59.99 Hz

- Measures instantaneous / average / min / max for voltage, current, active / reactive / apparent power, PF (cosφ) and line frequency all on one screen.
- The recording time for these parameters can be set from 1 second up to 2 hours in several steps.
- Trend of all main parameters and customized Zoom functions.
- Function to define size of capacitor banks of PF correction unit.



Integration value

Elapsed time 00:00:01:17

Active WP+: 83.2306 kWh
 Active WP-: 0.0000 kWh
 Apparent WS+: 85.3413 kWh
 Apparent WS-: 0.0000 kWh
 Reactive WQ+: 18.7191 kWh
 Reactive WQ-: 0.0000 kWh

- The display will list the active / reactive / apparent energy in total and for each phase consumed (or generated in case of co-generation like solar panels, etc).
- The elapsed time is also shown on the same display screen.

Demand

Time left 00:29:28

DEM Target 4.000 kW
 DEM Guess 3.918 kW
 DEM Present 0.069 kW
 DEM Max 0.069 kW

Time left 00:15:33

DEM P 21.4% DEM G 44.5%

0.958kW

- To support demand control, present energy usage and estimated value are displayed on a graph while recording max demand value and the occurred time.

PRINT SCREEN Print Screen

This function "takes a color photo" of the display screen and saves it as BMP file useful for reports.

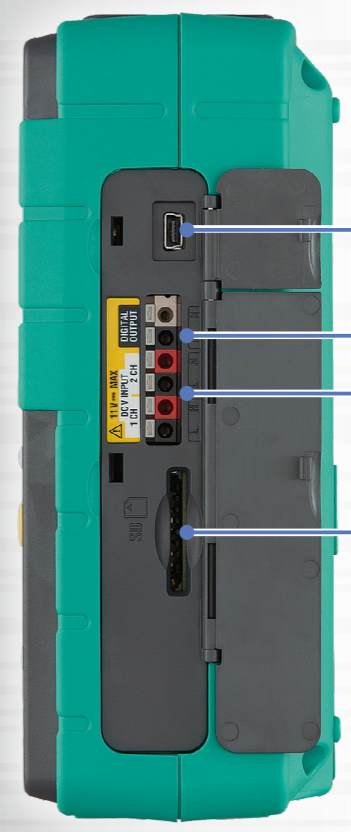


Waveform

● Displays voltage and current on each Ch by waveform.
 ● Scales of voltage/current axis and time axis are selectable, and also full-scale function for automatic scaling is available.

Harmonics Analysis

● Graphic display of harmonic components up to 50th order for voltage, current and power in total and for each phase.
 ● List display of harmonic content, rms value and phase angle of each order.
 ● Can analyze harmonic currents that may contribute to damage capacitor banks for PF correction, overheating transformers / neutral conductors / cables, unwanted tripping of breakers.



USB Terminal

Digital Output Terminal
 ● Open Collector Output (1ch)

Analogue Input Terminal
 ● 2ch DC100mV / 1000mV, 10V. To record additional parameters (i.e. Lux, Temperature, Humidity, etc.)

SD card Interface
 ● SD cards up to 2GB can be used
 Possible recording time When the 2GB of SD is used:

Interval	REC item	
	Power	+Harmonics
1sec	13days	3days
1min	1-year or more	3months
30min	10-year or more	7-year or more

Data of power quality events are not considered to estimate the possible recording time. The max possible time will be shortened by recording such events.

Vector and Wiring check

● Can display voltage and current by vector per CH and also unbalance ratio.
 ● Wiring check function confirms connection and displays ideal vector (at the lower left corner) according to the selected wiring system, and shows connection errors.

QUALITY Power Quality

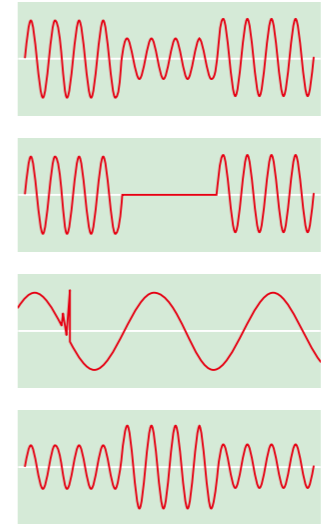
Event

All events	Occurrence
101.0 V	2013/07/18 10:45:43.136
50.4 V	2013/07/18 10:45:43.136
87.1 V	2013/07/18 10:45:35.136
128.5 V	2013/07/18 10:45:27.136
-217.1 V	2013/07/18 10:45:27.136
50.4 V	2013/07/18 10:45:18.136
87.1 V	2013/07/18 10:45:10.136
128.5 V	2013/07/18 10:45:02.136

Measures voltage swells / dips / interruptions / transients and inrush currents that may indicate a weak power distribution system. Such phenomena may damage or reset devices. KEW 6315 can catch swells / dips / interruptions and inrush currents based on half cycle (10 ms @ 50Hz or 8.3ms @ 60Hz) TRMS. All necessary data is displayed by pressing one key.

● Swell
 Swell is a instantaneous voltage increase, most of the time originated by upstream power line failure or switching OFF large load or switching ON large capacitor.

- Dip**
Dip, as the opposite of a swell, is a instantaneous voltage decrease, most of the time caused by switching ON large load e.g. motors or by downstream power line failure.
- Interruption**
Interruption is a power line cut-off from any source of supply. It can be caused by a fault in a power line, which causes switch gear to open.
- Transients/Over Voltage (Impulse)**
Transient is a very fast and momentary voltage increase that can seriously damage devices connected to a power line. It may be caused by electrical switching events such as instable contacts of relays, tripping of breakers but also by lightning. KEW 6315 can catch Transients from 2.4 μs.
- Inrush Current**
Inrush current is a surge current that happens when motors, large or low-impedance loads are switched ON. Then the current will stabilize as soon as the load has reached normal working conditions.



Flicker

Designed to meet IEC61000-4-15

Flicker is a phenomenon giving an impression of unsteadiness of visual sensation induced by periodic voltage changes caused by fluctuating loads when using: arc furnace, spot welder, crane, excavator, etc..

● Displays Pst (1min) on a trend graph.

Optional

Load current clamp sensors



Leakage & Load current clamp



※8146/8147/8148 can measure up to 10A

Power supply adaptor



Magnetic carrying case



Load current flexible clamp sensors



Can you close your distribution board door during surveys?

The KEW6315 facilitates safe testing by being extremely compact and with two clever option extras: a magnetic case(9132) for attaching it to the sides of metal enclosures and a power supply adaptor(8312) which takes the power for the instrument from the supply being measured.



Set Model

KEW 6315-01
8125(500A)×3
KEW 6315-03
8130(1000A)×3



Specifications

Wiring connections	1P2W, 1P3W, 3P3W, 3P4W		
Measurements and parameters	Voltage, Current, Frequency, Active power, Reactive power, Apparent power, Active energy, Reactive energy, Apparent energy, Power factor (cosθ), Neutral current, Demand, Harmonics, Quality (Swell/Dip/Interruption, Transients/Over voltage, Inrush current, Unbalance rate), Capacitance calculation for PF correction unit, Flicker		
Voltage (RMS)			
Range	600.0/1000V		
Accuracy	±0.2%rdg±0.2%f.s.(sine wave, 40~70Hz)		
Allowable input	1~120% of each range (rms), 200% of each range (peak)		
Display range	0.15~130% of each range		
Crest factor	3 or less		
Sampling speed of Voltage transient	2.4μs		
Current (RMS)			
Range	8128	(50A type)	: 5/50A/AUTO
	8127	(100A type)	: 10/100A/AUTO
	8126	(200A type)	: 20/200A/AUTO
	8125	(500A type)	: 50/500A/AUTO
	8124/8130	(1000A type)	: 100/1000A/AUTO
	8146/8147/8148	(10A type)	: 1/10A/AUTO
	8129	(3000A type)	: 300/1000/3000A
Accuracy	±0.2%rdg±0.2%f.s.+accuracy of clamp sensor (sine wave, 40~70Hz)		
Allowable input	1~110% of each range (rms), 200% of each range (peak)		
Display range	0.15~130% of each range		
Crest factor	3 or less		
Active power			
Accuracy	±0.3%rdg±0.2%f.s. + accuracy of clamp sensor (power factor 1, sine wave, 40~70Hz)		
Influence of power factor	±1.0%rdg (reading at power factor 0.5 against power factor 1)		

Frequency meter range	40~70Hz
Power supply(AC Line)	AC100~240V/50~60Hz/7VA max
Power supply(DC battery)	Alkaline size AA battery LR6 or Ni-MH(HR15-51)×6 Battery life approx. 3 h (LR6, Backlight OFF)
Internal memory	FLASH memory (4MB)
PC card interface	SD card (2GB)
PC communication interface	USB Ver2.0, Bluetooth Ver2.1+EDR Class2
Display	320×240(RGB)Pixel, 3.5inch color TFT display
Display update period	1 sec
Temperature and humidity range	23±5°C, less than 85% RH(without condensation)
Operating temperature and humidity range	0~45°C, less than 85% RH(without condensation)
Storage temperature and humidity range	-20~60°C, less than 85% RH(without condensation)
Applicable Standards	IEC61010-1 CATIV 300V, CATIII 600V, CATII 1000V Pollution degree 2 IEC61010-2-030, IEC61010-031, IEC61326, EN50160 IEC61000-4-30 Class S, IEC61000-4-15, IEC61000-4-7
Dimension/Weight	175(L) × 120(W) × 68(D) mm/approx 900g
Included accessories	7141B(Voltage test lead), 7170(Power cord), 7219(USB cable), 8326-02(SD card 2GB), 9125(Carrying case for KEW6315), 9135(Carrying case for KEW6315-03), Input terminal plate×6, KEW Windows for KEW6315(software), Calibration Certificate Quick manual, Alkaline size AA battery(LR6)×6
Optional accessories	8124, 8125, 8126, 8127, 8128(Load current clamp sensor), 8129, 8130(Flexible clamp sensor), 8146, 8147, 8148(Leakage and Load current clamp sensor), 8312(Power supply adaptor), 9132(Magnetic carrying case)

Safety Warnings :

Please read the "Safety Warnings" in the instruction manual supplied with the instrument thoroughly and completely for correct use. Failure to follow the safety rules can cause fire, trouble, electrical shock, etc. Therefore, make sure to operate the instrument on a correct power supply and voltage rating marked on each instrument.

■ For inquires or orders :

 **KYORITSU ELECTRICAL INSTRUMENTS WORKS, LTD.**

2-5-20, Nakane, Meguro-ku, Tokyo, 152-0031 Japan
Phone:+81-3-3723-0131
Fax:+81-3-3723-0152
E-mail:info-eng@kew-ltd.co.jp

<http://www.kew-ltd.co.jp>



In consideration of the environment, soy ink and recycled paper were used in this publication. ●The contents of this leaflet are subject to change without notice.

KEW 6315-1E Feb. 14 AD